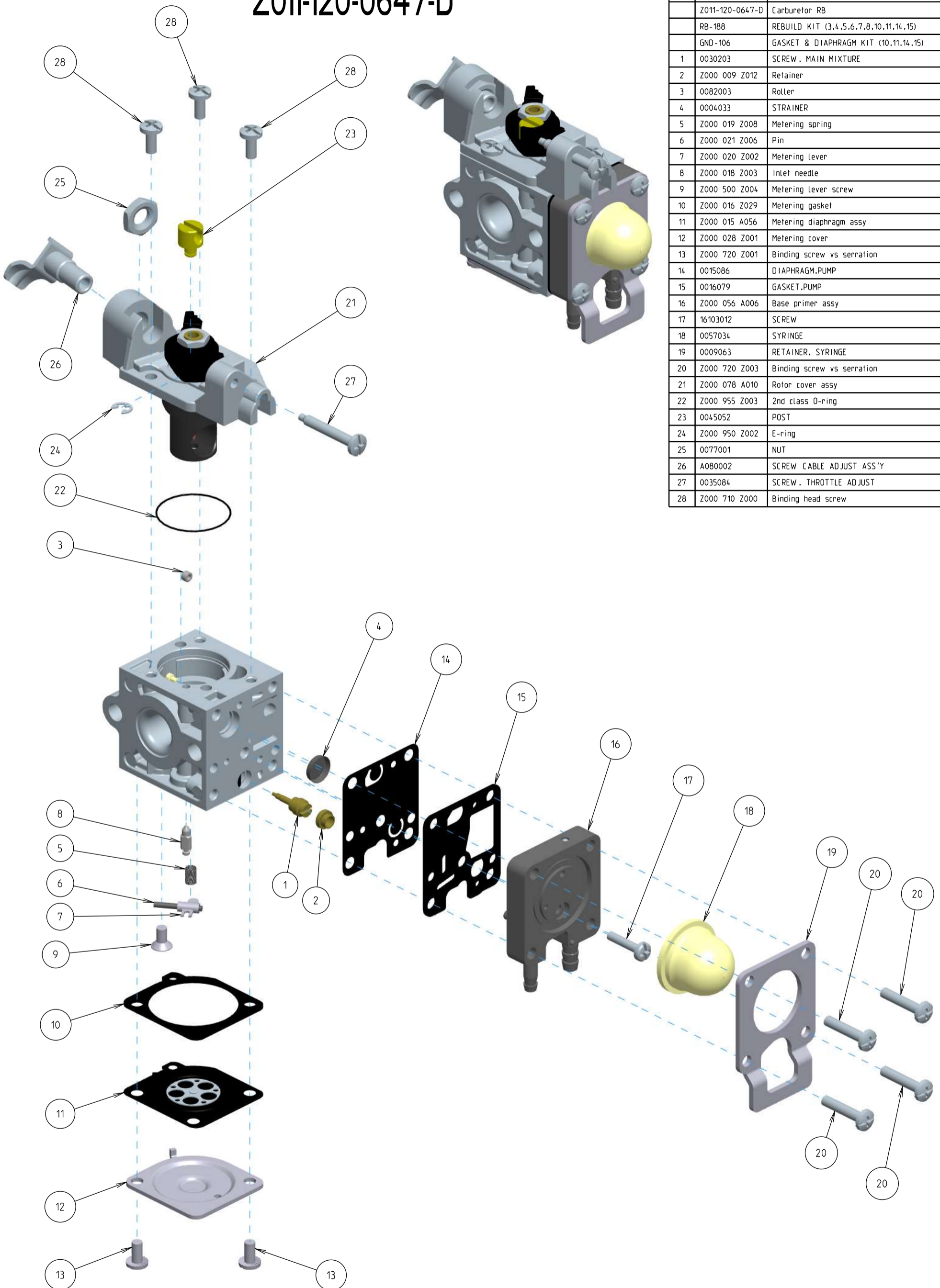


# Z011-120-0647-D



| ITEM | ZAMA PART NR.   | DESCRIPTION                           |
|------|-----------------|---------------------------------------|
|      | Z011-120-0647-D | Carburetor RB                         |
|      | RB-188          | REBUILD KIT (3,4,5,6,7,8,10,11,14,15) |
|      | GND-106         | GASKET & DIAPHRAGM KIT (10,11,14,15)  |
| 1    | 0030203         | SCREW, MAIN MIXTURE                   |
| 2    | Z000 009 Z012   | Retainer                              |
| 3    | 0082003         | Roller                                |
| 4    | 0004033         | STRAINER                              |
| 5    | Z000 019 Z008   | Metering spring                       |
| 6    | Z000 021 Z006   | Pin                                   |
| 7    | Z000 020 Z002   | Metering Lever                        |
| 8    | Z000 018 Z003   | Inlet needle                          |
| 9    | Z000 500 Z004   | Metering lever screw                  |
| 10   | Z000 016 Z029   | Metering gasket                       |
| 11   | Z000 015 A056   | Metering diaphragm assy               |
| 12   | Z000 028 Z001   | Metering cover                        |
| 13   | Z000 720 Z001   | Binding screw vs serration            |
| 14   | 0015086         | DIAPHRAGM,PUMP                        |
| 15   | 0016079         | GASKET,PUMP                           |
| 16   | Z000 056 A006   | Base primer assy                      |
| 17   | 16103012        | SCREW                                 |
| 18   | 0057034         | SYRINGE                               |
| 19   | 0009063         | RETAINER, SYRINGE                     |
| 20   | Z000 720 Z003   | Binding screw vs serration            |
| 21   | Z000 078 A010   | Rotor cover assy                      |
| 22   | Z000 955 Z003   | 2nd class O-ring                      |
| 23   | 0045052         | POST                                  |
| 24   | Z000 950 Z002   | E-ring                                |
| 25   | 0077001         | NUT                                   |
| 26   | A080002         | SCREW CABLE ADJUST ASS'Y              |
| 27   | 0035084         | SCREW, THROTTLE ADJUST                |
| 28   | Z000 710 Z000   | Binding head screw                    |