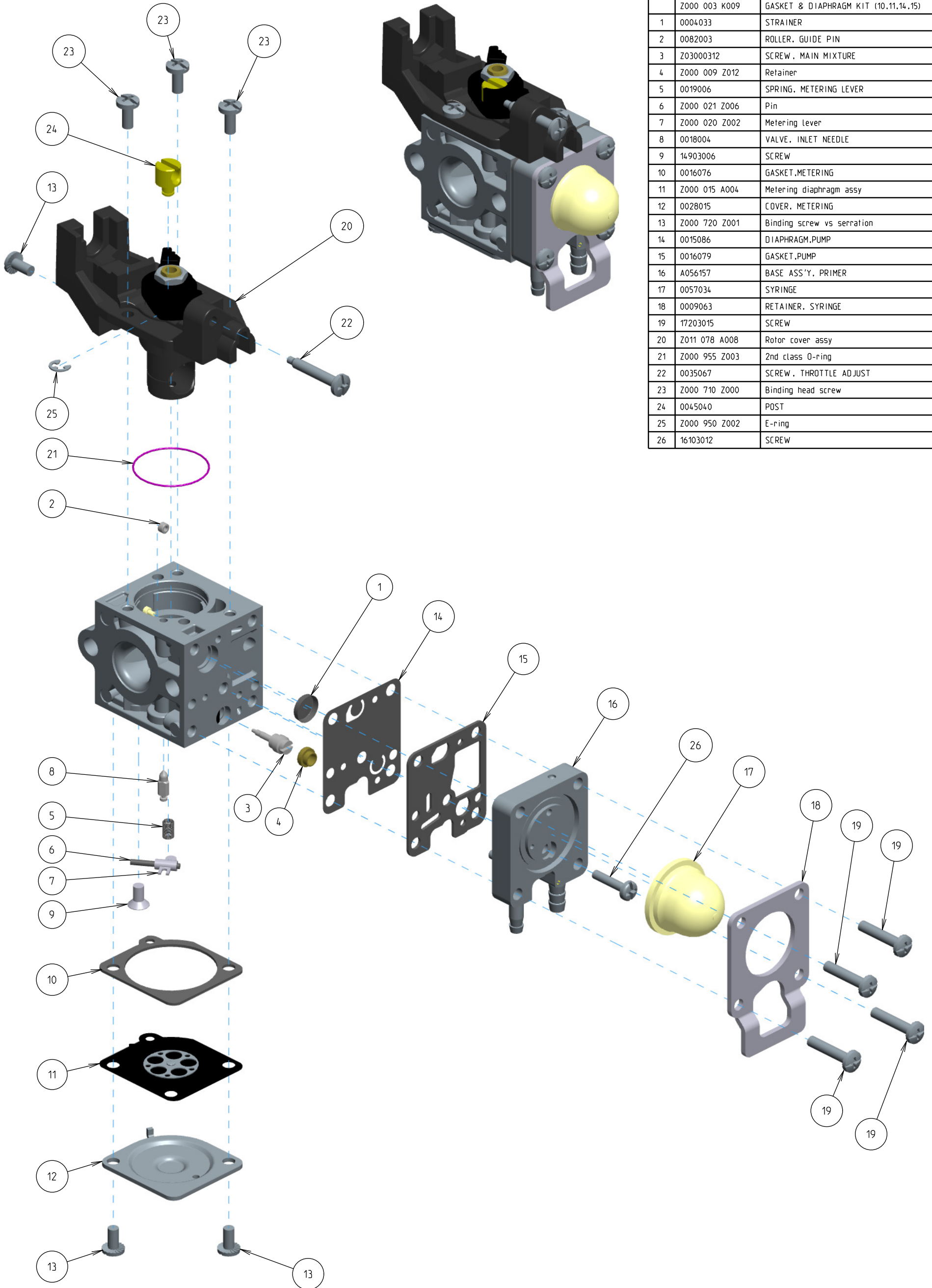


Z011-120-0608-A



ITEM	ZAMA PART NR.	DESCRIPTION
	Z011-120-0608-A	CARBURETOR ASSEMBLY
	Z000 001 K017	REBUILD KIT (1.2.5.6.7.8.10.11.14.15)
	Z000 003 K009	GASKET & DIAPHRAGM KIT (10.11.14.15)
1	0004033	STRAINER
2	0082003	ROLLER, GUIDE PIN
3	Z03000312	SCREW, MAIN MIXTURE
4	Z000 009 Z012	Retainer
5	0019006	SPRING, METERING LEVER
6	Z000 021 Z006	Pin
7	Z000 020 Z002	Metering lever
8	0018004	VALVE, INLET NEEDLE
9	14903006	SCREW
10	0016076	GASKET, METERING
11	Z000 015 A004	Metering diaphragm assy
12	0028015	COVER, METERING
13	Z000 720 Z001	Binding screw vs serration
14	0015086	DIAPHRAGM, PUMP
15	0016079	GASKET, PUMP
16	A056157	BASE ASS'Y, PRIMER
17	0057034	SYRINGE
18	0009063	RETAINER, SYRINGE
19	17203015	SCREW
20	Z011 078 A008	Rotor cover assy
21	Z000 955 Z003	2nd class O-ring
22	0035067	SCREW, THROTTLE ADJUST
23	Z000 710 Z000	Binding head screw
24	0045040	POST
25	Z000 950 Z002	E-ring
26	16103012	SCREW