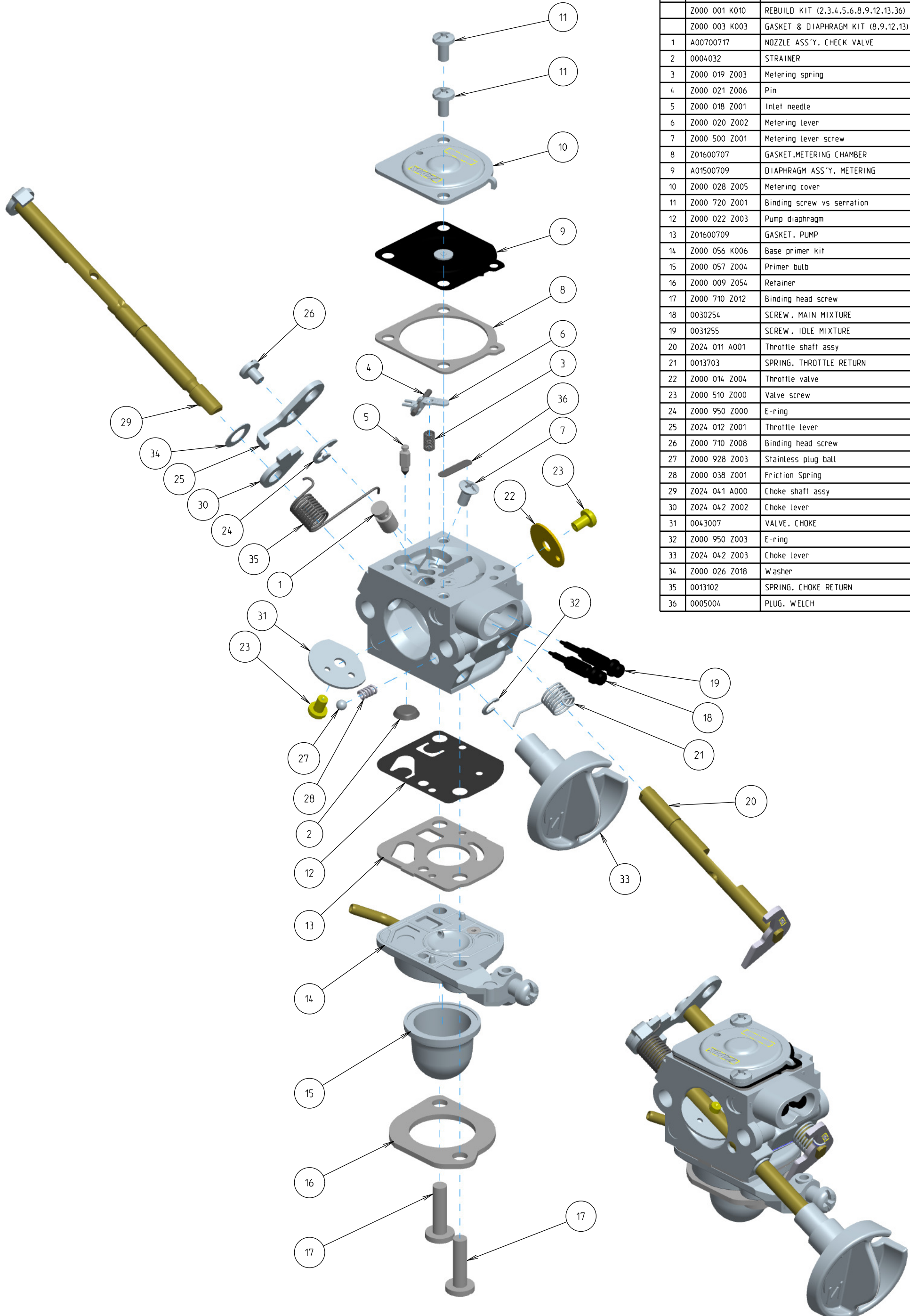


Z024-120-0602-B



ITEM	ZAMA PART NR.	DESCRIPTION
	Z024-120-0602-B	CARBURETOR ASSEMBLY
	Z000 001 K010	REBUILD KIT (2,3,4,5,6,8,9,12,13,36)
	Z000 003 K003	GASKET & DIAPHRAGM KIT (8,9,12,13)
1	A00700717	NOZZLE ASS'Y. CHECK VALVE
2	0004032	STRAINER
3	Z000 019 Z003	Metering spring
4	Z000 021 Z006	Pin
5	Z000 018 Z001	Inlet needle
6	Z000 020 Z002	Metering Lever
7	Z000 500 Z001	Metering Lever screw
8	Z01600707	GASKET.METERING CHAMBER
9	A01500709	DIAPHRAGM ASS'Y. METERING
10	Z000 028 Z005	Metering cover
11	Z000 720 Z001	Binding screw vs serration
12	Z000 022 Z003	Pump diaphragm
13	Z01600709	GASKET. PUMP
14	Z000 056 K006	Base primer kit
15	Z000 057 Z004	Primer bulb
16	Z000 009 Z054	Retainer
17	Z000 710 Z012	Binding head screw
18	0030254	SCREW. MAIN MIXTURE
19	0031255	SCREW. IDLE MIXTURE
20	Z024 011 A001	Throttle shaft assy
21	0013703	SPRING. THROTTLE RETURN
22	Z000 014 Z004	Throttle valve
23	Z000 510 Z000	Valve screw
24	Z000 950 Z000	E-ring
25	Z024 012 Z001	Throttle lever
26	Z000 710 Z008	Binding head screw
27	Z000 928 Z003	Stainless plug ball
28	Z000 038 Z001	Friction Spring
29	Z024 041 A000	Choke shaft assy
30	Z024 042 Z002	Choke Lever
31	0043007	VALVE. CHOKE
32	Z000 950 Z003	E-ring
33	Z024 042 Z003	Choke Lever
34	Z000 026 Z018	Washer
35	0013102	SPRING. CHOKE RETURN
36	0005004	PLUG. WELCH