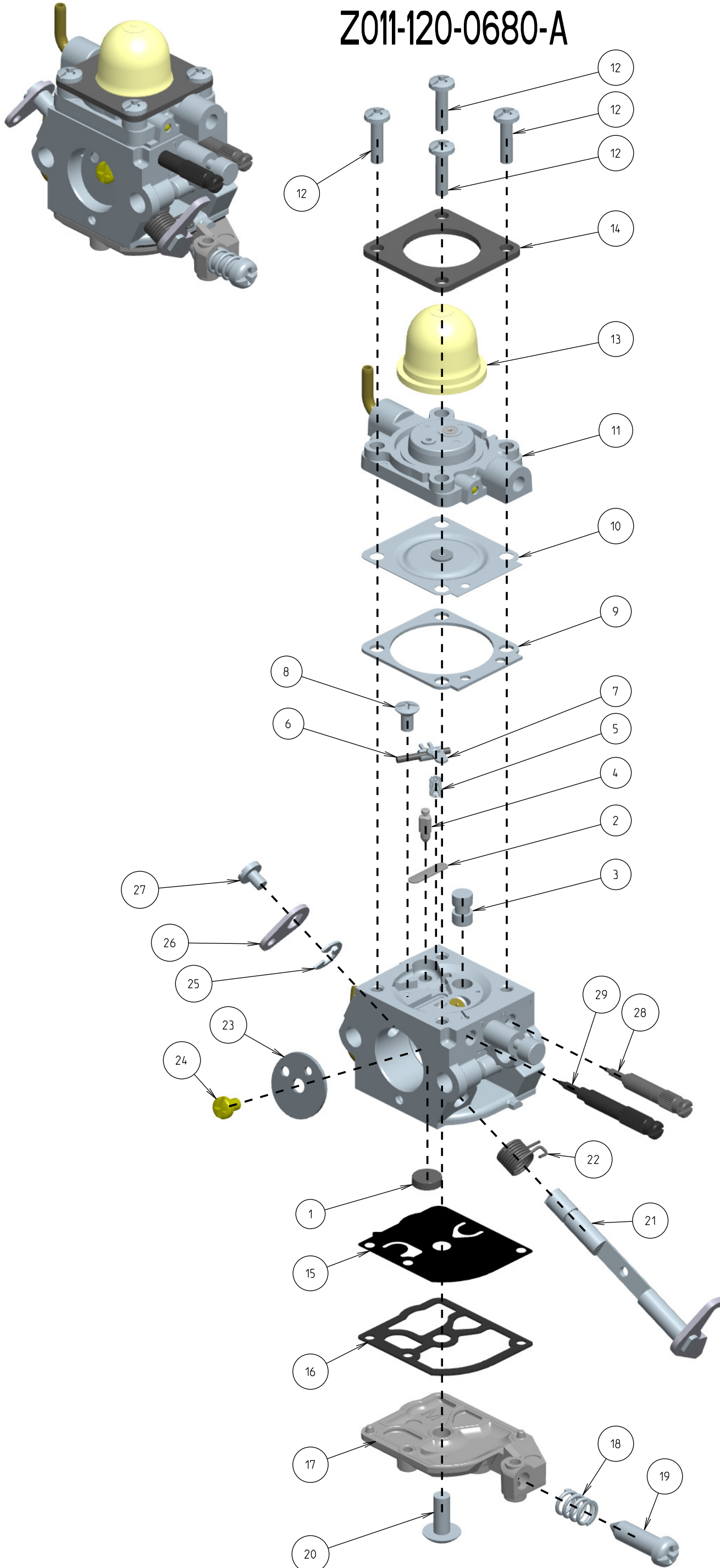


Z011-120-0680-A



ITEM	ZAMA PART NR.	DESCRIPTION
	Z011-120-0680-A	Carburetor
	Z000 001 K156	Rebuild kit (1,2,4,5,6,7,9,10,15,16)
	Z000 003 K089	Gasket & diaphragm kit (9,10,15,16)
	Z000 017 K011	Pump cover kit (17,18,19)
	Z000 061 Z007	Limiter Cap (H)
	Z000 061 Z001	Limiter Cap (L)
1	Z000 004 Z010	Strainer
2	Z000 005 Z021	Plug
3	Z000 007 A161	Nozzle assy
4	Z000 018 Z003	Inlet needle
5	Z000 019 Z013	Metering spring
6	Z000 021 Z006	Pin
7	Z000 020 Z002	Metering lever
8	Z000 500 Z001	Metering lever screw
9	Z000 016 Z010	Metering gasket
10	Z000 015 A063	Metering diaphragm assy
11	Z000 056 A035	Base primer assy
12	Z000 720 Z000	Binding screw vs serration
13	Z011 057 Z000	Primer bulb
14	Z000 009 Z007	Retainer
15	Z000 022 Z005	Pump diaphragm
16	Z000 023 Z005	Pump gasket
17	Z000 017 Z013	Pump cover
18	Z000 029 Z008	Adjustment screw spring
19	Z000 035 Z044	Idle speed screw
20	Z000 700 Z000	Truss head screw
21	Z000 011 A055	Throttle shaft assy
22	Z000 013 Z118	Return spring
23	Z000 014 Z026	Throttle valve
24	Z000 510 Z000	Valve screw
25	Z000 950 Z000	E-ring
26	Z000 012 Z044	Throttle lever
27	Z000 710 Z008	Binding head screw
28	Z000 030 Z136	High speed screw
29	Z000 031 Z166	Low speed screw