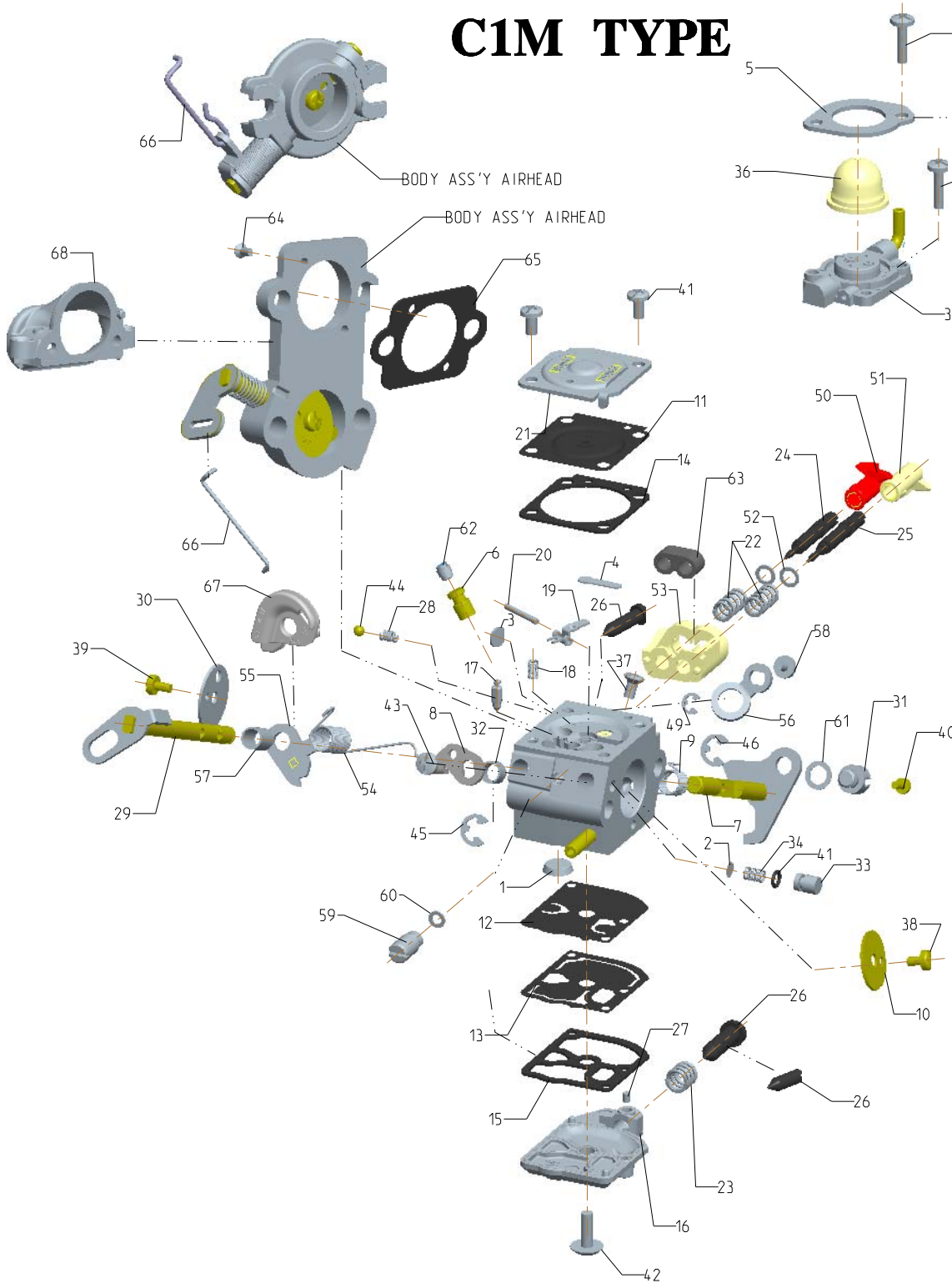


* THIS ILLUSTRATION DOES NOT REPRESENT EVERY MODEL. THIS IS INTENDED FOR A GENERIC REFERENCE ONLY.

C1M TYPE



REF. NO.	PART NAME
	BODY ASS'Y, AIRHEAD
1	STRAINER
2	STRAINER
3	PLUG, WELCH
4	PLUG, WELCH
5	RETAINER, SYRINGE
6	NOZZLE ASS'Y, CHECK VALVE
7	SHAFT ASSEMBLY, THROTTLE
8	LEVER, THROTTLE
9	SPRING, THROTTLE RETURN
10	VALVE, THROTTLE
11	DIAPHRAGM ASS'Y, METERING
12	DIAPHRAGM, PUMP
13	DIAPHRAGM, PUMP
14	GASKET, METERING CHAMBER
15	GASKET, PUMP
16	COVER, PUMP
17	VALVE, INLET NEEDLE
18	SPRING, METERING LEVER
19	LEVER, METERING
20	PIN
21	COVER, METERING CHAMBER
22	SPRING, ADJUST SCREW
23	SPRING, ADJUST SCREW
24	SCREW, MAIN MIXTURE
25	SCREW, IDLE MIXTURE
26	SCREW, THROTTLE ADJUST
27	PIECE, FRICTION
28	SPRING, FRICTION
29	SHAFT ASS'Y, CHOKE
30	VALVE, CHOKE
31	POST
32	COLLAR
33	PLUNGER
34	SPRING, PLUNGER RETURN
35	BASE ASSEMBLY, PRIMER
36	SYRINGE
37	SCREW (PIN)
38	SCREW (THROTTLE VALVE)
39	SCREW (CHOKE VALVE)
40	SCREW (POST)
41	SCREW (METERING COVER)
42	SCREW (PUMP COVER)
43	SCREW (THROTTLE LEVER)
44	BALL, STEEL
45	E-RING (THROTTLE SHAFT)
46	E-RING (POST)
47	O-RING (PLUNGER)
48	SCREW, RETAINER
49	E-RING (CHOKE SHAFT)
50	LIMITER, MIXTURE (H)
51	LIMITER, MIXTURE (L)
52	WASHER (LIMITER)
53	RETAINER (LIMITER)
54	SPRING, CHOKE
55	LEVER, CHOKE CONTROL
56	LEVER, CHOKE
57	COLLAR, CHOKE SHAFT
58	SCREW, CHOKE SHAFT
59	GOVERNOR ASS'Y
60	WASHER (GOVERNOR)
61	WASHER (POST)
62	REMOTE JET
63	BOOT, RETAINER
64	SCREW
65	GASKET, AIRHEAD
66	ROD LINKAGE, AIRHEAD
67	LEVER, THROTTLE AIRHEAD
68	BODY, AIRHEAD