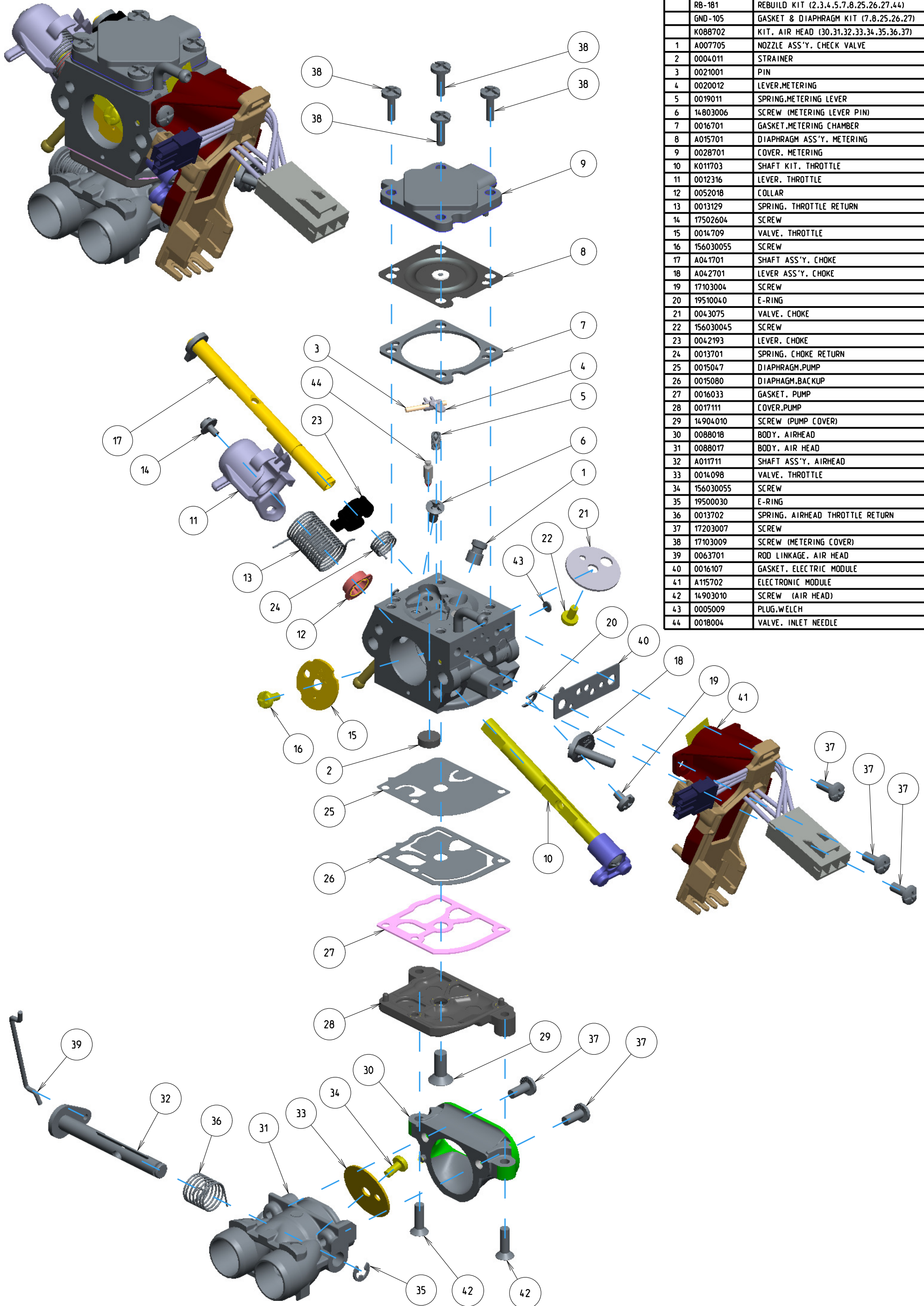


# C1M-140059A



ITEM	ZAMA PART NR.	DESCRIPTION
	C1M-140059A	CARBURETOR ASSEMBLY
	RB-181	REBUILD KIT (2.3.4.5.7.8.25.26.27.44)
	GND-105	GASKET & DIAPHRAGM KIT (7.8.25.26.27)
	K088702	KIT, AIR HEAD (30.31.32.33.34.35.36.37)
1	A007705	NOZZLE ASS'Y, CHECK VALVE
2	0004011	STRAINER
3	0021001	PIN
4	0020012	LEVER,METERING
5	0019011	SPRING,METERING LEVER
6	14803006	SCREW (METERING LEVER PIN)
7	0016701	GASKET,METERING CHAMBER
8	A015701	DIAPHRAGM ASS'Y, METERING
9	0028701	COVER, METERING
10	K011703	SHAFT KIT, THROTTLE
11	0012316	LEVER, THROTTLE
12	0052018	COLLAR
13	0013129	SPRING, THROTTLE RETURN
14	17502604	SCREW
15	0014709	VALVE, THROTTLE
16	156030055	SCREW
17	A041701	SHAFT ASS'Y, CHOKE
18	A042701	LEVER ASS'Y, CHOKE
19	17103004	SCREW
20	19510040	E-RING
21	0043075	VALVE, CHOKE
22	156030045	SCREW
23	0042193	LEVER, CHOKE
24	0013701	SPRING, CHOKE RETURN
25	0015047	DIAPHRAGM,PUMP
26	0015080	DIAPHRAGM,BACKUP
27	0016033	GASKET, PUMP
28	0017111	COVER,PUMP
29	14904010	SCREW (PUMP COVER)
30	0088018	BODY, AIRHEAD
31	0088017	BODY, AIR HEAD
32	A011711	SHAFT ASS'Y, AIRHEAD
33	0014098	VALVE, THROTTLE
34	156030055	SCREW
35	19500030	E-RING
36	0013702	SPRING, AIRHEAD THROTTLE RETURN
37	17203007	SCREW
38	17103009	SCREW (METERING COVER)
39	0063701	ROD LINKAGE, AIR HEAD
40	0016107	GASKET, ELECTRIC MODULE
41	A115702	ELECTRONIC MODULE
42	14903010	SCREW (AIR HEAD)
43	0005009	PLUG,WELCH
44	0018004	VALVE, INLET NEEDLE